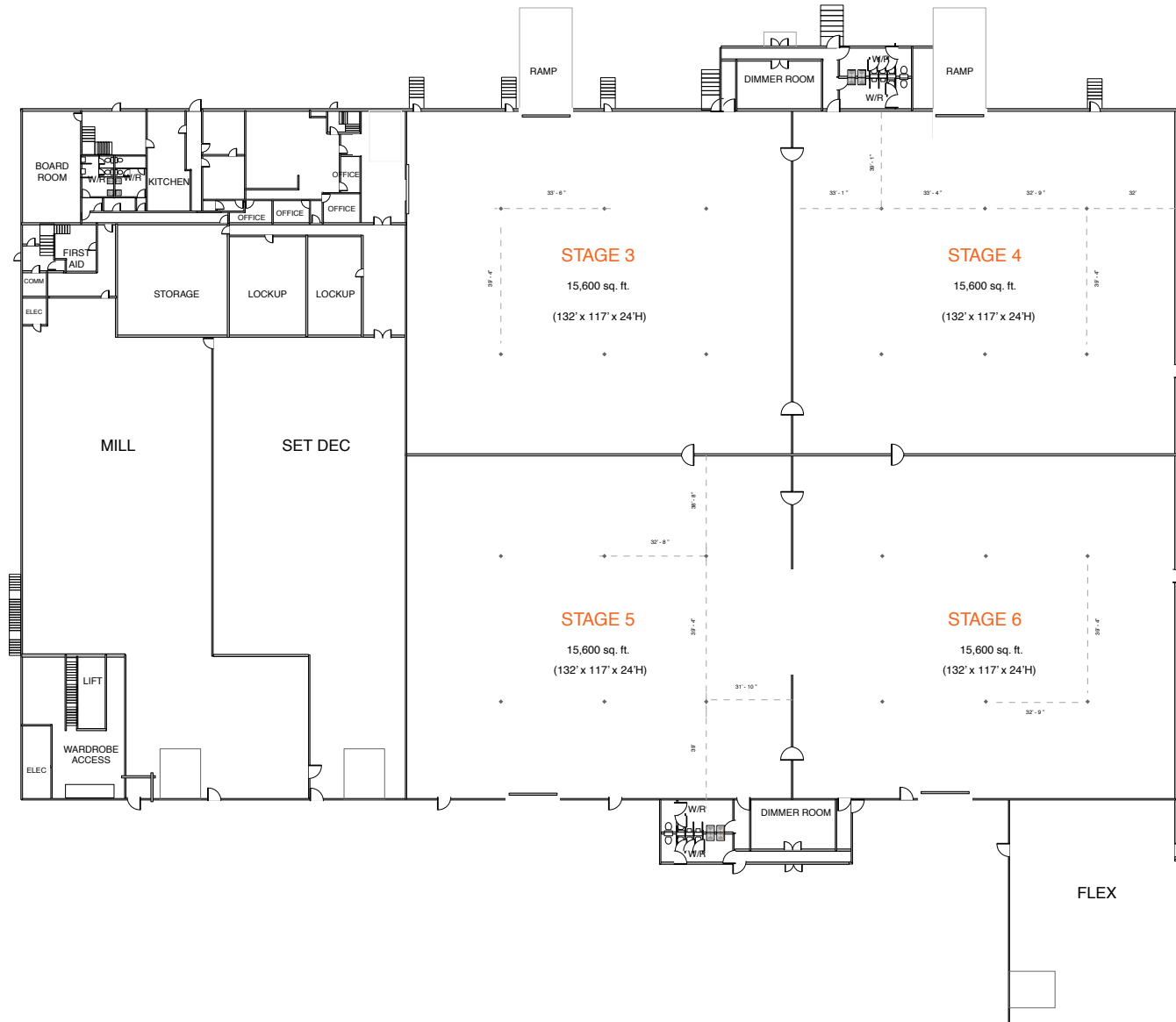


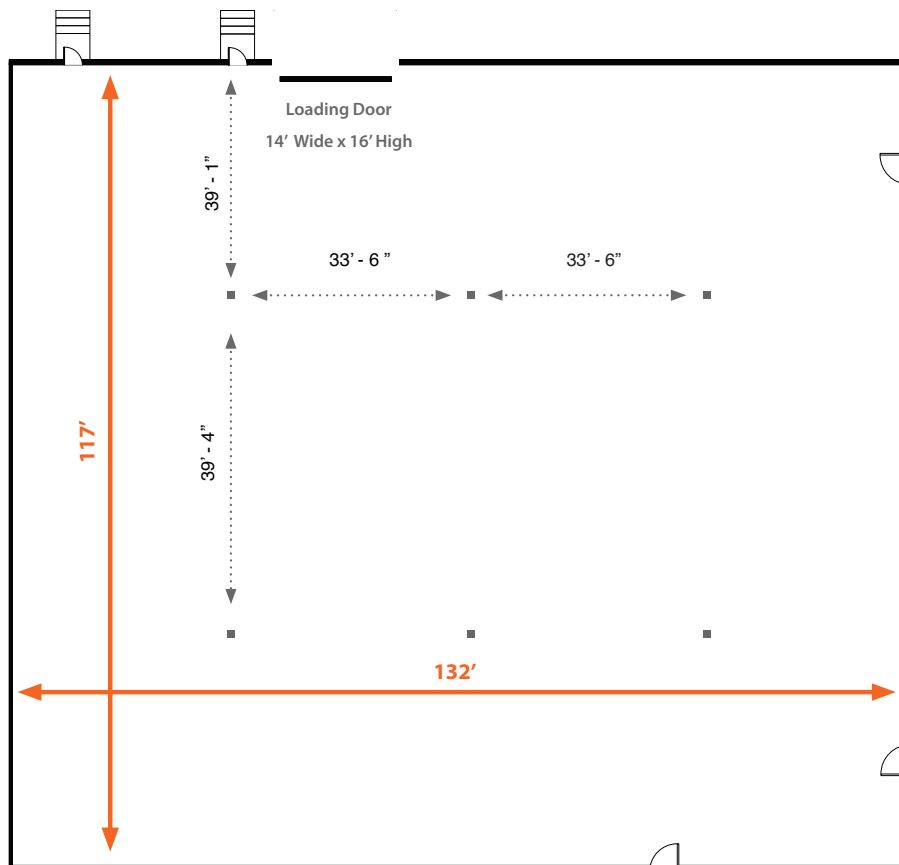
STUDIO B - FIRST FLOOR

LOCATION ADDRESS: 9380 198TH STREET LANGLEY, BC



STUDIO B - STAGE 3

LOCATION ADDRESS: 9380 198TH STREET LANGLEY, BC

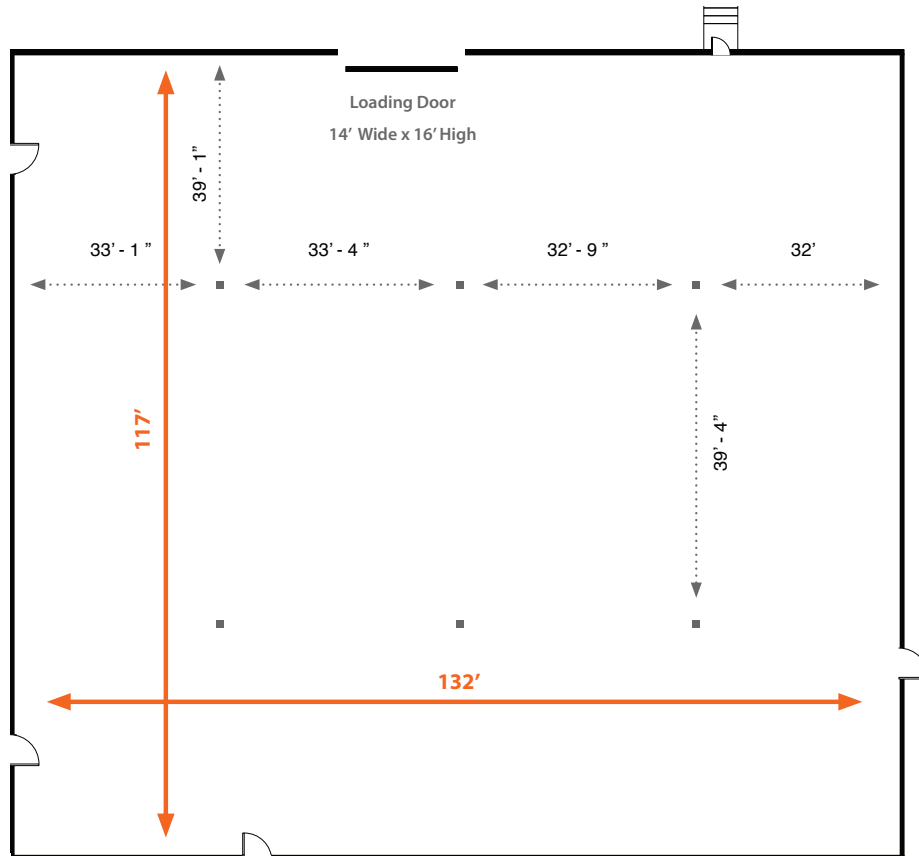
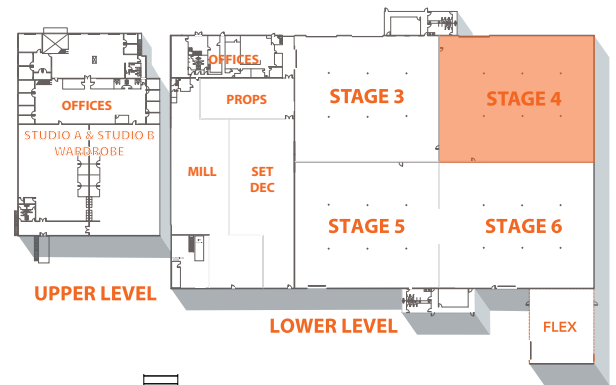


STAGE 3 FEATURES:

-  Connected to 14,460 square feet of furnished offices
-  2 x 400 Amp Camlock Panels
-  15,600 sq ft | 132' x 117'
24 feet to truss
-  Acoustical insulation throughout
-  Air Conditioning, Heating and Ventilation
-  Grade level loading door 14' W x 16' H
Interior passages to stage 4 and 5

STUDIO B - STAGE 4

LOCATION ADDRESS: 9380 198TH STREET LANGLEY, BC

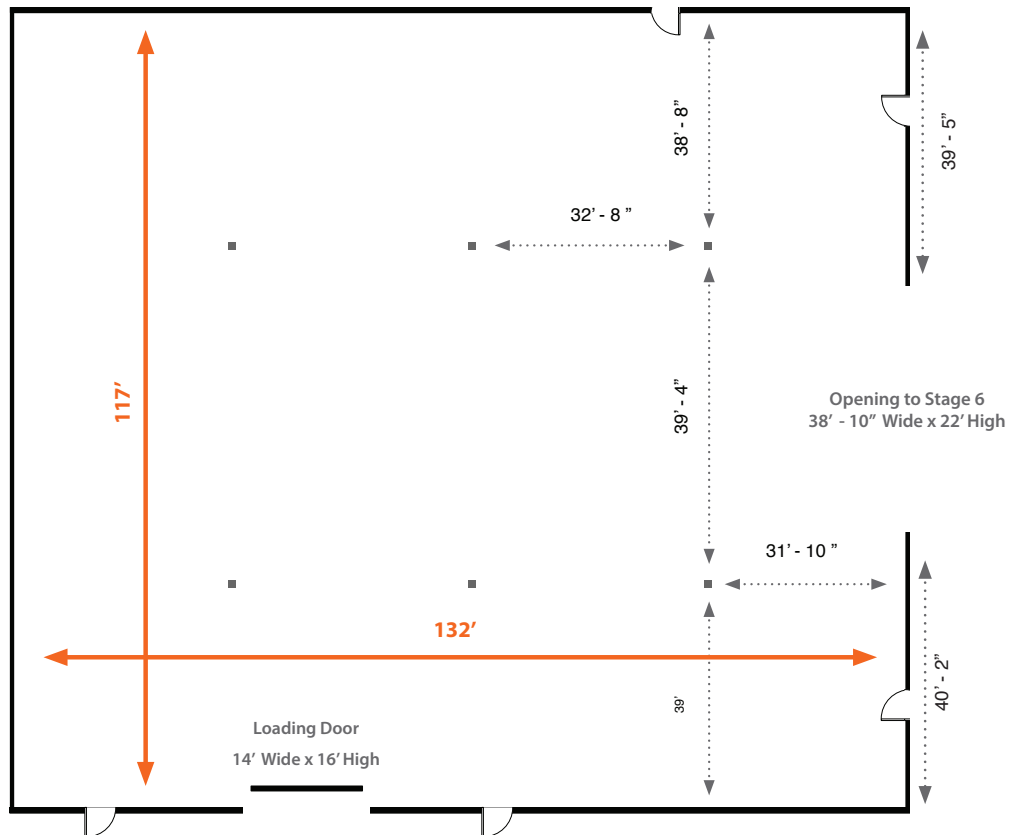
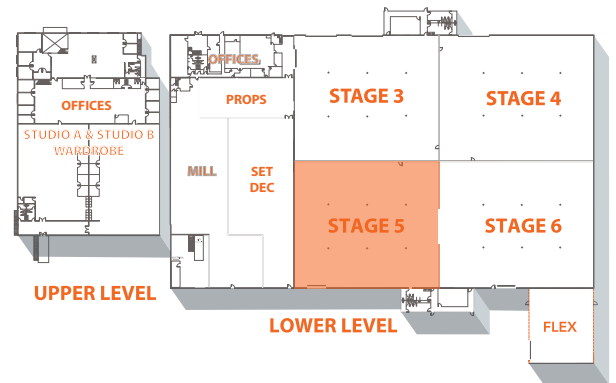


STAGE 4 FEATURES:

-  Connected to 14,460 square feet of furnished offices
-  2 x 400 Amp Camlock Panels
-  15,600 sq ft | 132' x 117'
24 feet to truss
-  Acoustical insulation throughout
-  Air Conditioning, Heating and Ventilation
-  Grade level loading door 14' W x 16' H
Interior passages to stage 4 and 6

STUDIO B - STAGE 5

LOCATION ADDRESS: 9380 198TH STREET LANGLEY, BC

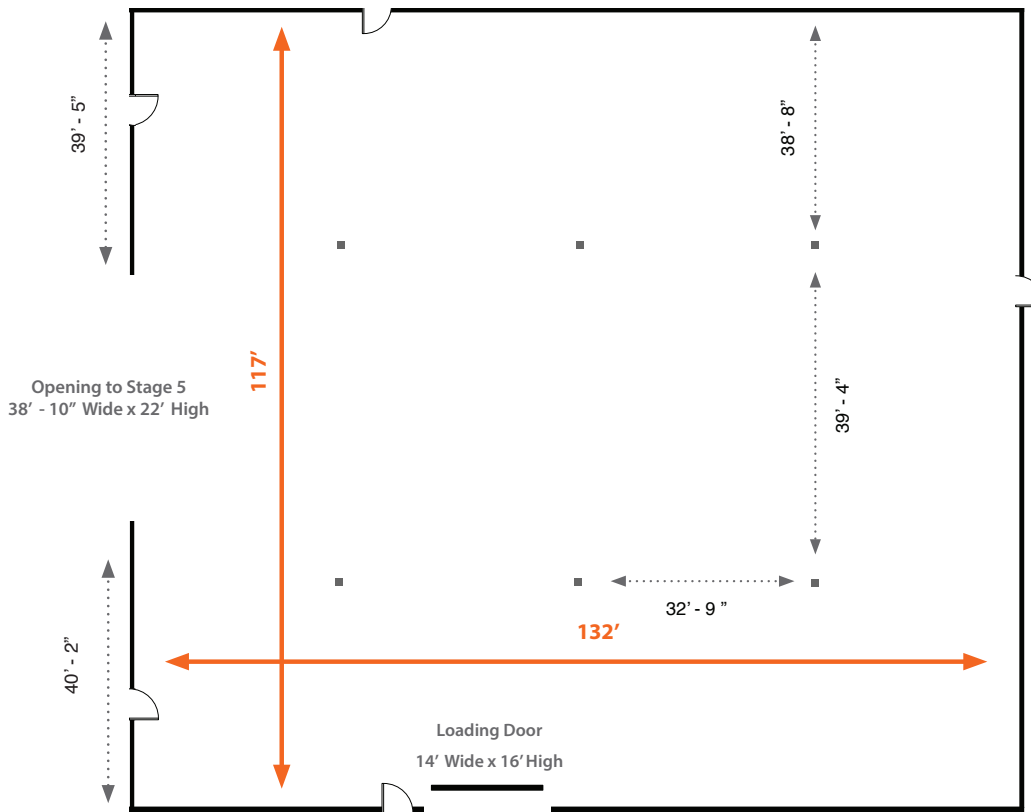
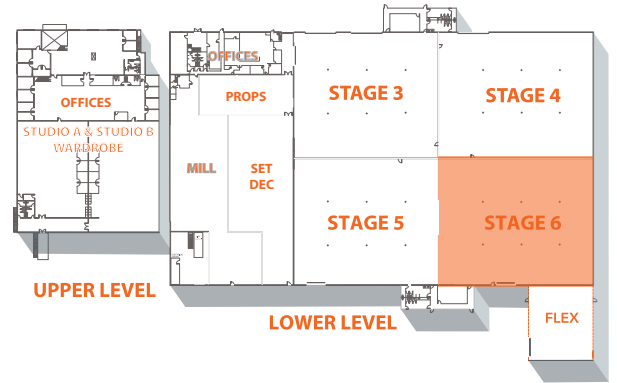


STAGE 5 FEATURES:

-  Connected to 14,460 square feet of furnished offices
-  2 x 400 Amp Camlock Panels
-  15,600 sq ft | 132' x 117'
24 feet to truss
-  Acoustical insulation throughout
-  Air Conditioning, Heating and Ventilation
-  Grade level loading door 14' W x 16' H
Opening to stage 6, passage to stage 3

STUDIO B - STAGE 6

LOCATION ADDRESS: 9380 198TH STREET LANGLEY, BC

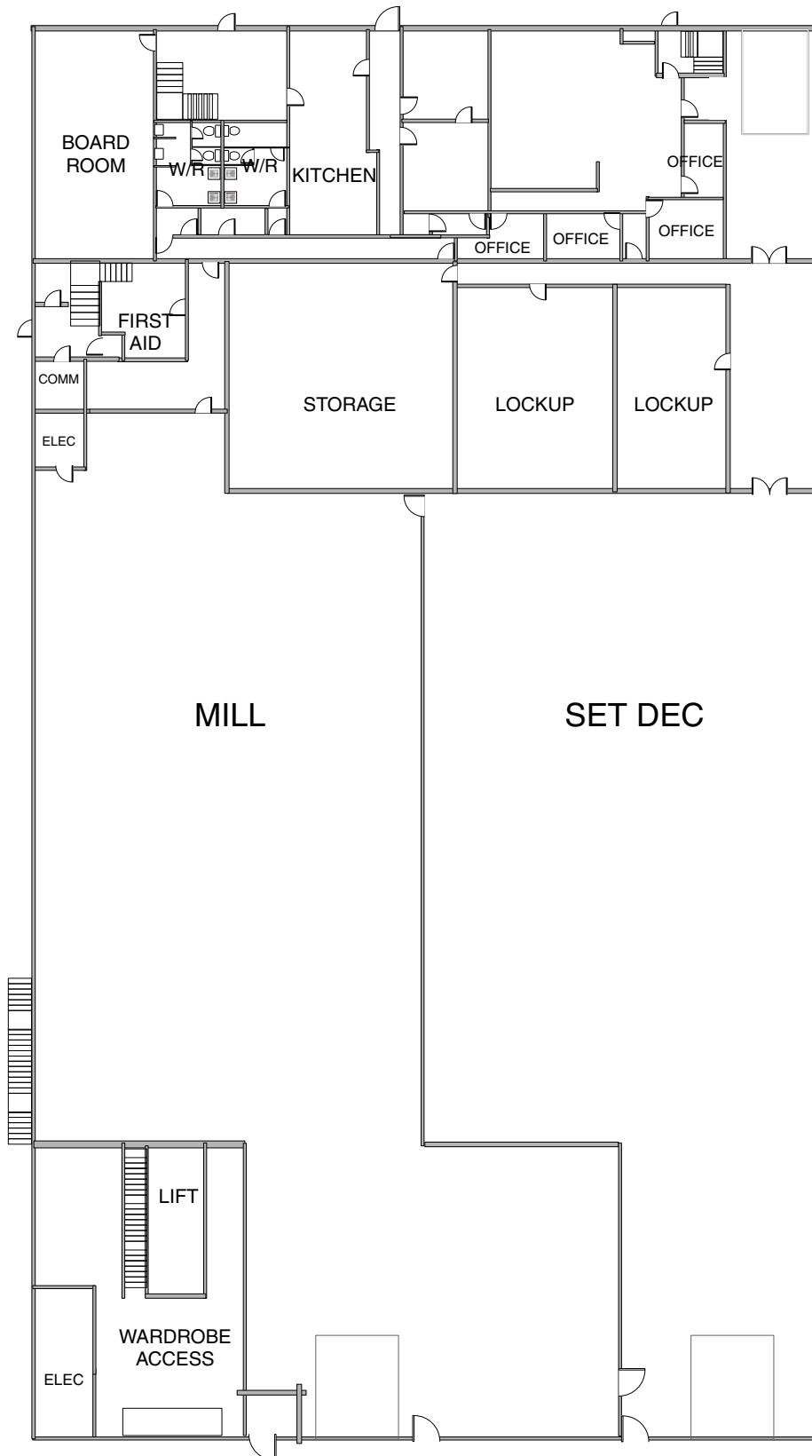


STAGE 6 FEATURES:

-  Connected to 14,460 square feet of furnished offices
-  Acoustical insulation throughout
-  2 x 400 amp Camlock Panels
-  Air Conditioning, Heating and Ventilation
-  15,600 sq ft | 132' x 117'
24 feet to truss
-  Grade level loading door 14' W x 16' H
Opening to stage 5, passage to stage 4

STUDIO B - LOWER OFFICES

LOCATION ADDRESS: 9380 198TH STREET LANGLEY, BC



STUDIO B - UPPER OFFICES

LOCATION ADDRESS: 9380 198TH STREET LANGLEY, BC

